

Cementing - Adhesive pad, Model 206

Main Characteristics

- Permanent mounting
- For industrial side connector accelerometer
- Stainless steel (AISI 303, AISI 316L)

Description

Cementing pads are used for permanent installations. It eliminates tapping into the structure but provide high frequency capability approaching stud mount. The pad is epoxied in place of the tapped hole; the sensor is then mounted to the pad. Cementing - adhesive pads can provide additional electrical isolation. Adhesive selection is critical for long term reliability. Our cemented pads feature a flat abraded mounting surface for superior bonding and a tapped hole (M6, M8 or 1/4" 28 UNF) for mounting the accelerometer.

Ordering information

To order, specify part number, options and suffix :

206.01- AA - BB - C

AA : Sensor thread

- 06 - M6x1
- 16 - 1/4" 28 UNF

BB : Diameter

- 25 - 25 mm

C : Material

- 1 - AISI 303
- 2 - AISI 316L

Stocked models :

206.01-16-25-1 / 206.01-06-25-1

Ordering example

206.01-06-25-1 Adhsive pad, M6, AISI 303

Specifications

Environmental

Temperature depends on adhesive

Physical

Dimensions See outline drawing Fig 1a

Weight ~XX gr (~ XX Oz)

Material Stainless steel

Accessories

Adhesive Loctite 330

Competitors cross reference list Wilcoxon SF8, SF8-2 / CTC online MH130-1A, MH133-1A / AMPO ERD20 (not stainless steel)

Picture
not available

Model 206.01-06-25

Outline drawing

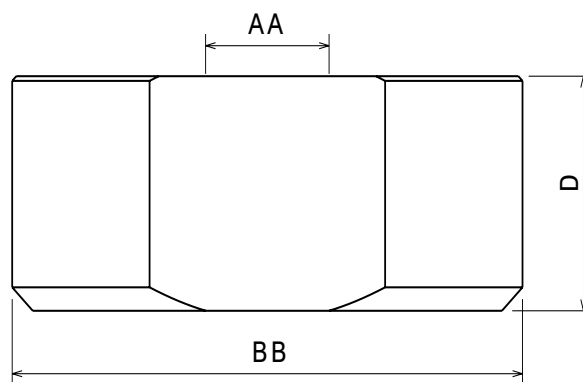


Fig 1a

Model	D (mm)	Application
206.01-06-25-1	10	Model 103
206.01-16-25-1	10	Model 103

Mounting drawing

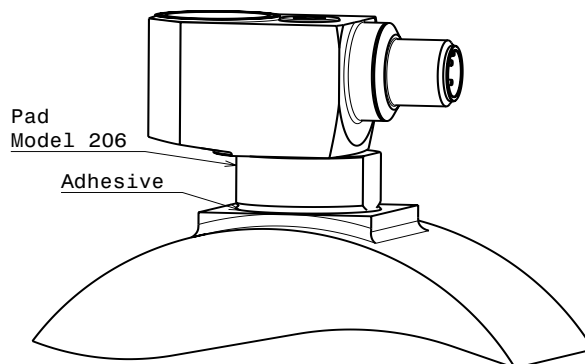


Fig 2a

Outline drawing

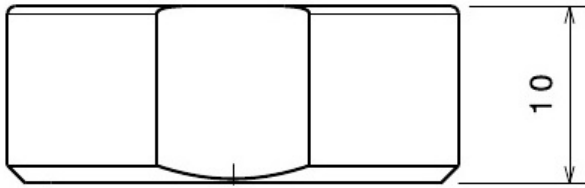


Fig 1a

Model	D (mm)	Application
206.31-06-25-1	10	Model 131
206.31-16-25-1	10	Model 131

Outline drawing

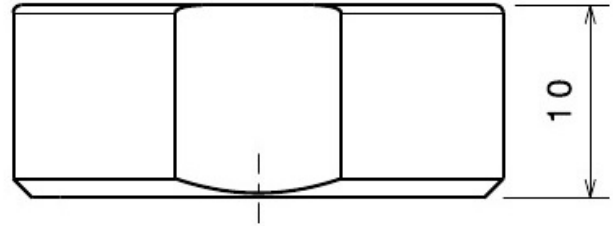


Fig 1a

Model	D (mm)	Application
206.38-06-25-1	10	Model 138
206.38-16-25-1	10	Model 138

Mounting drawing

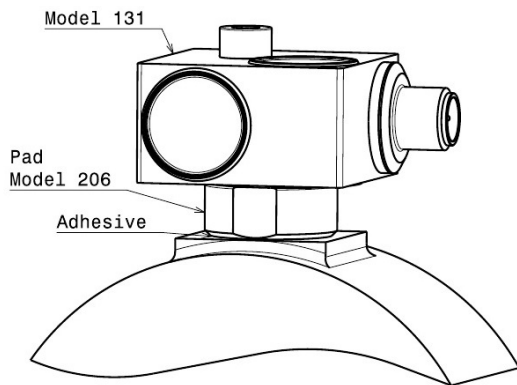


Fig 2a

Mounting drawing

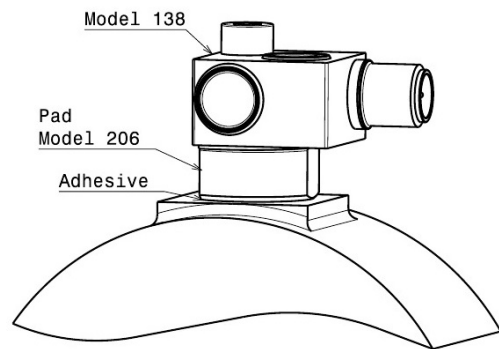


Fig 2b