

## Bolt, captive, Hex socket, Model 193

### Main Characteristics

- -260°C to 260 °C (-436°F to 500°F)
- Bolt for accelerometer model 103 and 107

### Description

This bolt is used to mount side connector industrial accelerometers ( model 103 and 107) with through hole mounting.

### Ordering information

To order, specify part number, options and suffix :

**193.01- AA - C (Mod)**

**AA : Machine/Structure end**

- 06 - M6x1
- 16 - 1/4 28 UNF 2A

**C : Material**

- 1 - Aisi 303
- 2 - Aisi 316L

**(Mod)**

(Mod)\*\* : modification defined by customers. For example shoulder diameter.

### Ordering example

193.01-06-1 Bolt, captive, Hex socket

### Stocked models :

193.01-06-1 and 193.01-16-1

### Specifications

Environmental

Temperature .....-260 to 260 °C (-436 to 500 °F)

Physical

Dimensions ..... See outline drawing

Weight .....~7 gr (~ 0.25 Oz)

Material

C=1 .....AISI 303, DIN1.4301, AFNOR Z10 CNF 18 09

C=2 .....AISI 316L, DIN1.4435, AFNOR Z2 CND 17 13

Mounting torque..... 2.7 N.m (24 in-lbs)

### Outline drawing

See table below to check the associated drawing

	AA	Figures
M6x1	06	Fig 21
1/4 28 UNF 2A	16	Fig 41



Model 193.01-06-1

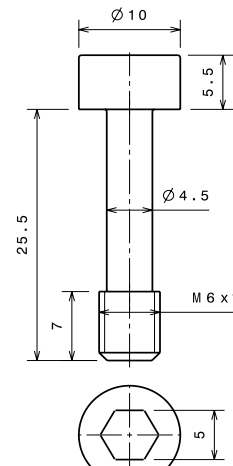


Fig 21

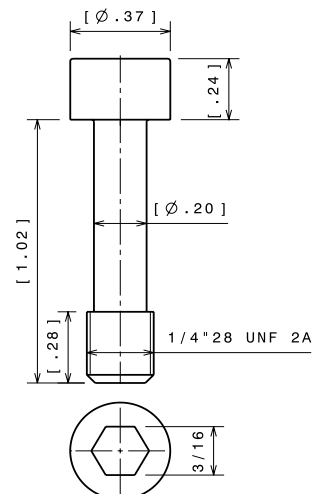


Fig 41