

Bolt, captive, Hexagonal, Model 194

Main Characteristics

- -260°C to 260 °C (-436°F to 500°F)
- Bolt for accelerometer model 104

Description

This bolt is used to mount side connector industrial accelerometers (model 104) with through hole mounting.

Ordering information

To order, specify part number, options and suffix :

194.01- AA - C (Mod)

AA : Machine/Structure end

08 - M8x1.25

C : Material

- 1 - Aisi 303
- 2 - Aisi 316L

(Mod)

(Mod)** : modification defined by customers. For example shoulder diameter.

Ordering example

194.01-08-1 Bolt, captive, Hex socket

Stocked models :

194.01-08-1

Specifications

Environmental

Temperature-260 to 260 °C (-436 to 500 °F)

Physical

Dimensions See outline drawing

Weight~9 gr (~ 0.35 Oz)

Material

C=1AISI 303, DIN1.4301, AFNOR Z10 CNF 18 09

C=2AISI 316L, DIN1.4435, AFNOR Z2 CND 17 13

Mounting torque..... 2.7 N.m (24 in-lbs)

Outline drawing

See table below to check the associated drawing

	AA	Figures
M8x1.25	08	Fig 11



Model 194.01-08-1

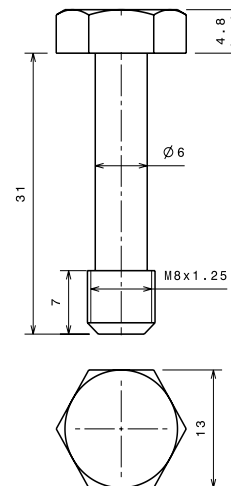


Fig 11